

II/K5

± 0,00

6N

ø47
archit.

40

+ 4,08

ø PCV ø47
ta proj archit.
34-21

Rura PCV ø47
w posadzce
T234-33

T234

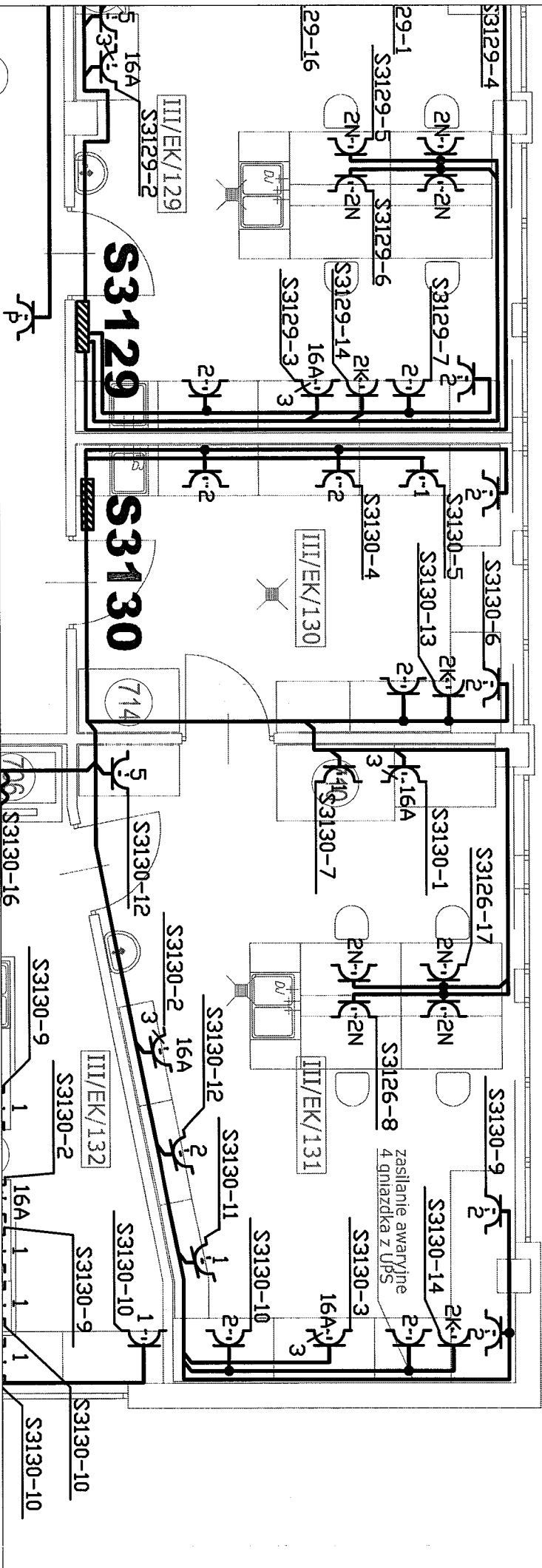
Rura PCV ø47
w posadzce
T234-24

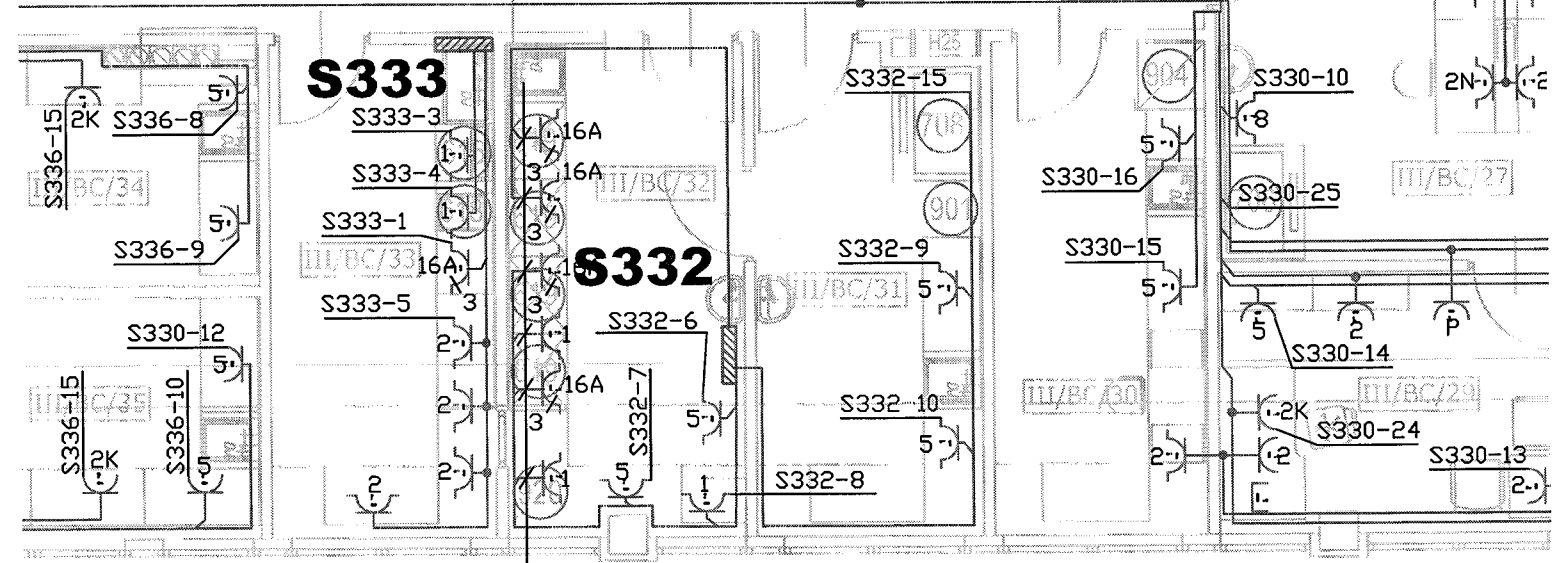
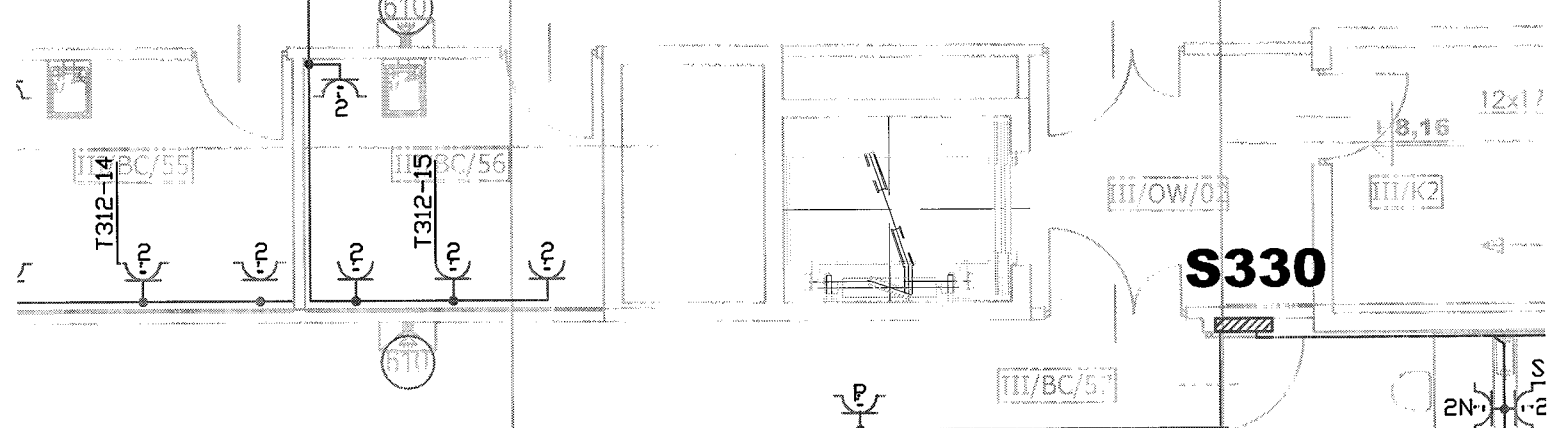
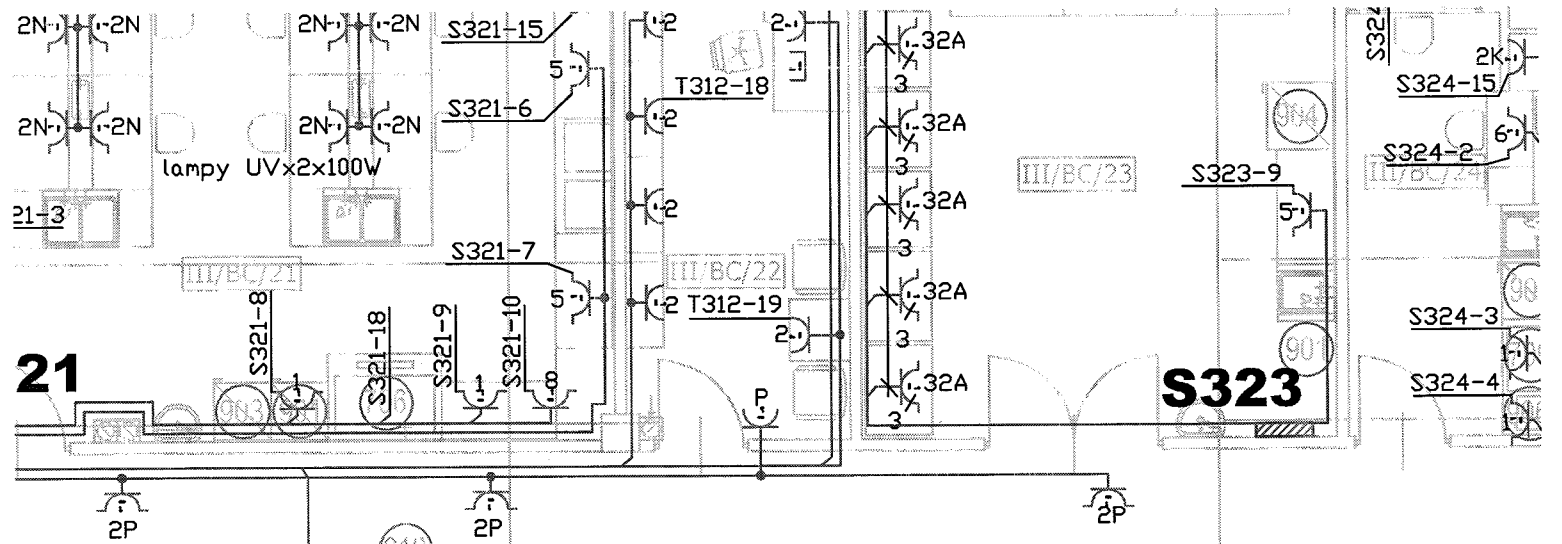
II/OW/27

II/OW/30

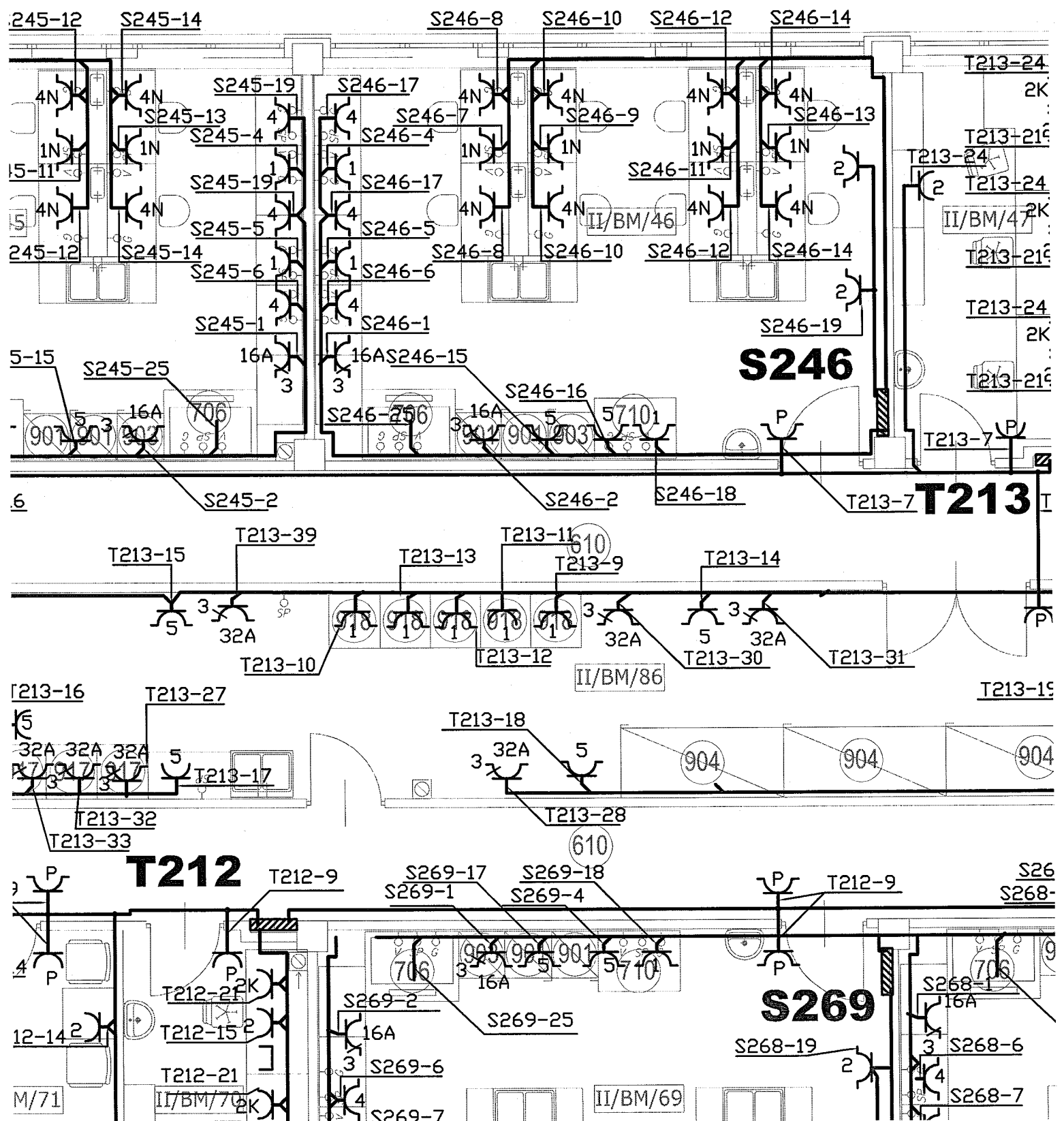
II/OW/3

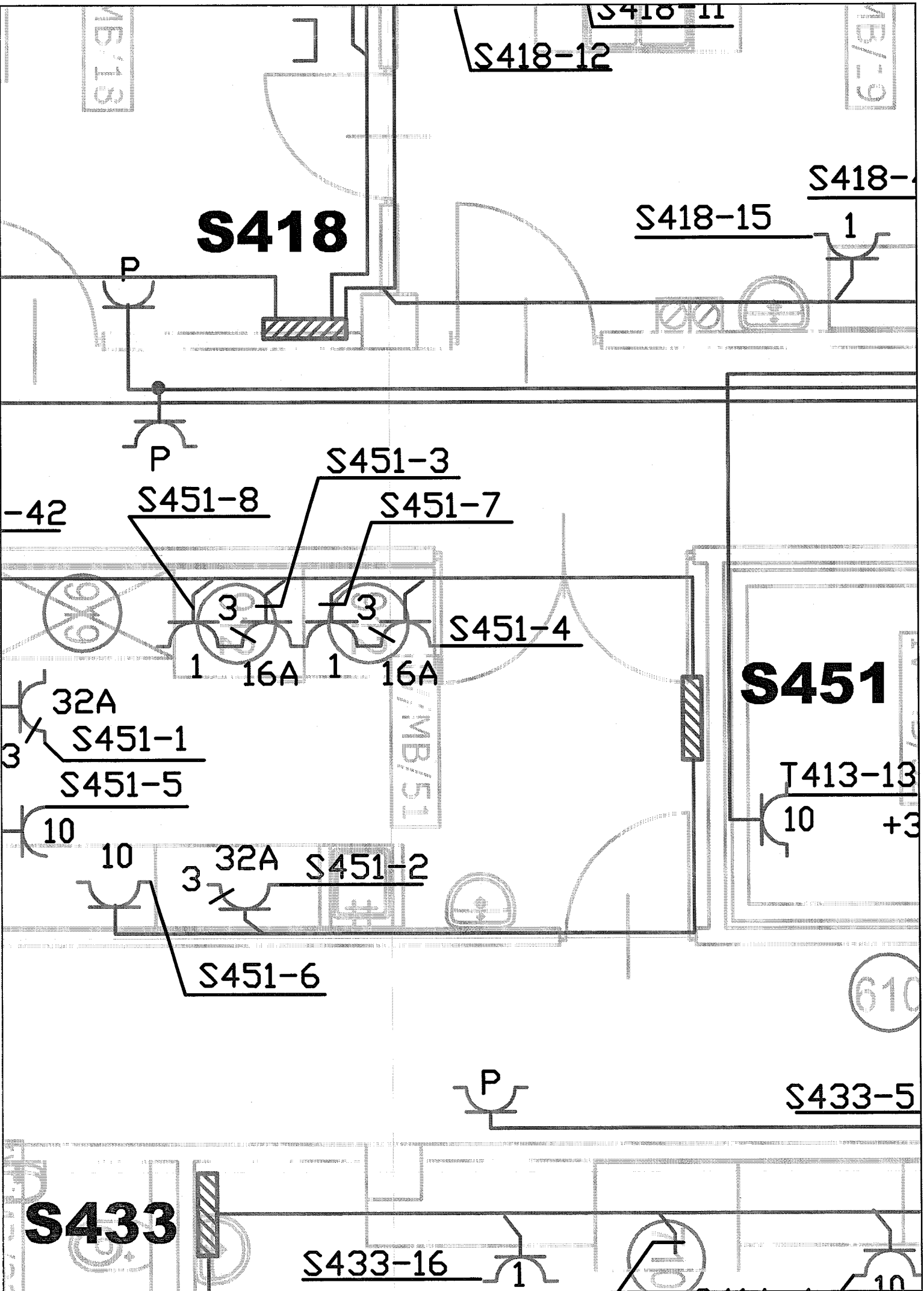
T2





- S332-1
- S332-2
- S332-3
- S332-4
- S332-18
- S332-5





S418

S451

S433

S418-12

S418-15

S418-

-42

S451-3

S451-8

S451-7

S451-4

32A

S451-1

S451-5

32A

S451-2

S451-6

T413-13

10

+3

610

P

S433-5

S433-16

1

10

1N

